

Features

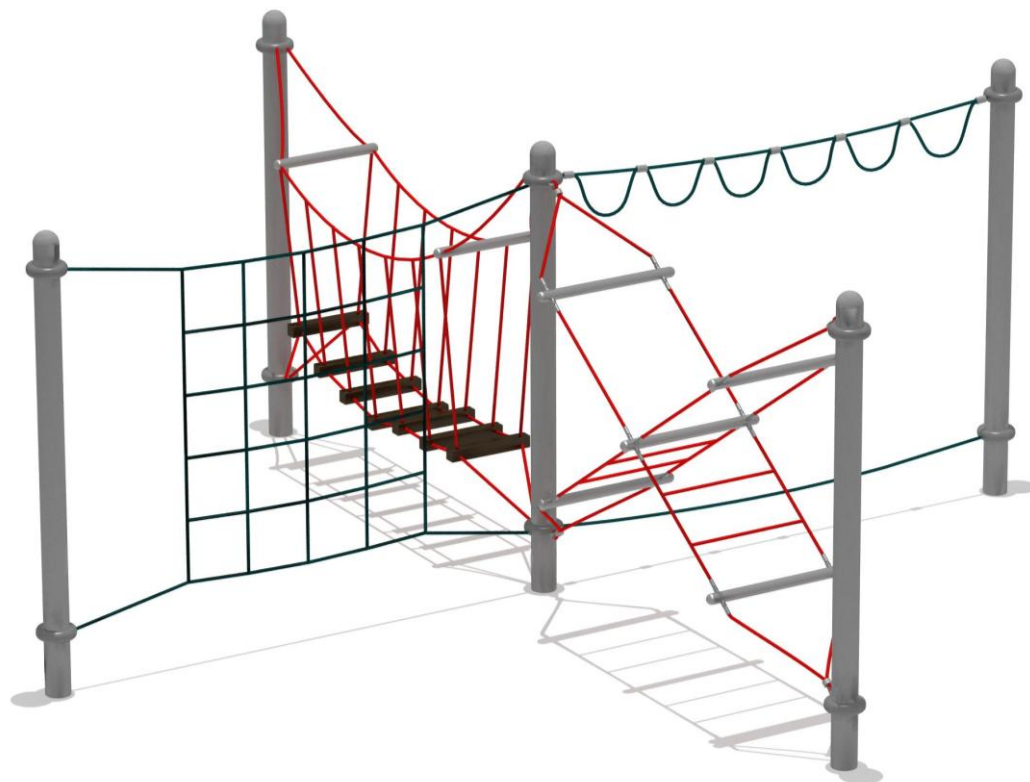
The GS-NS M202 features **GS Web Technology** which includes the highest steel content and the strongest connection materials in the industry, including a steel-wire core in our edge ropes and connection points crushed in place with over **75 tons** of pressure to ensure long life of the games and maximum safety for the children.

Specification

Ages	5 to 12 years
Capacity	21
Size	L6.0m x W6.0m x H3.0m
Use Zone (Safety Area)	7.2m x 7.2m
Fall Height	1.3m

GSWeb Playground Equipment

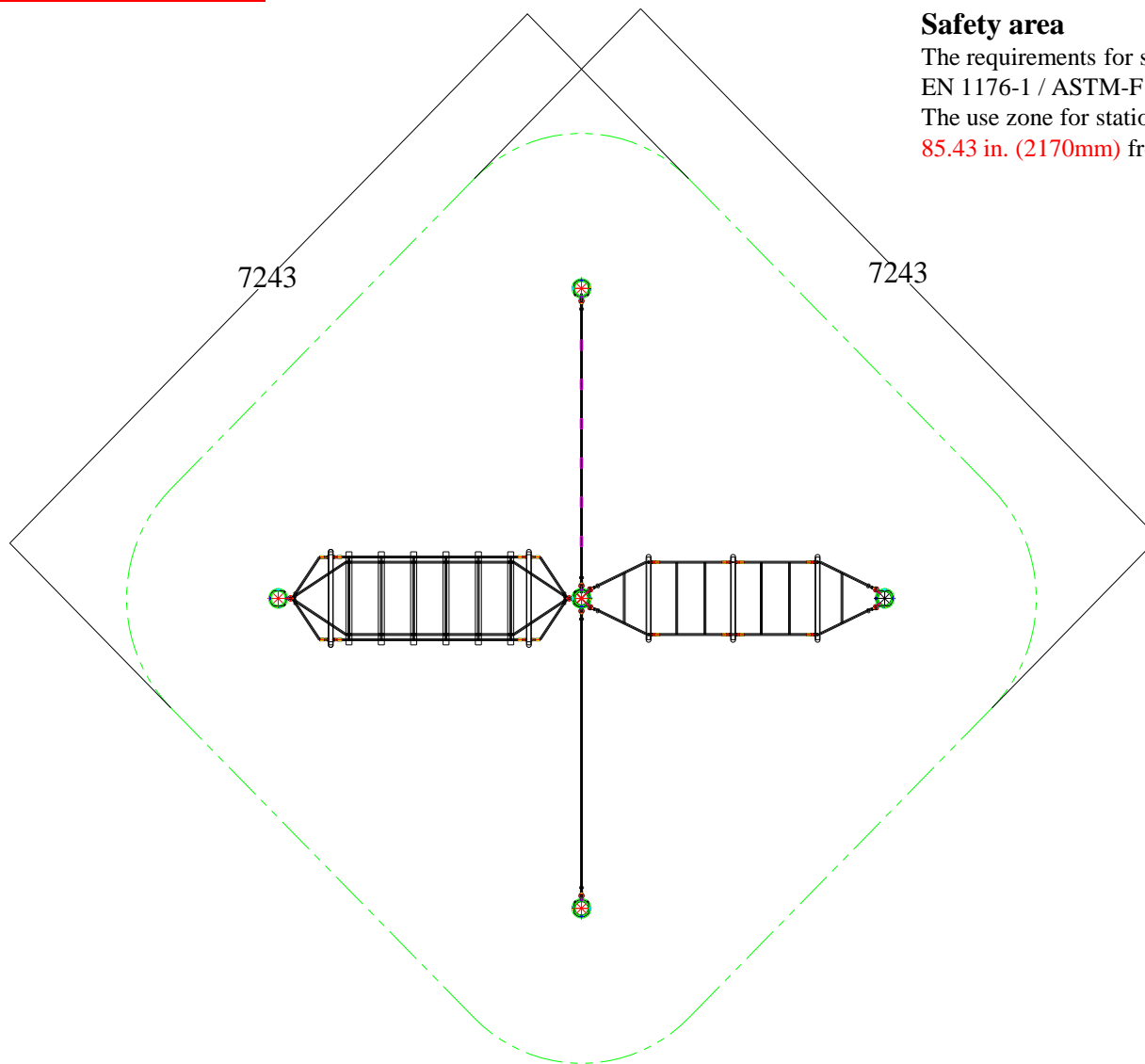
1046-3, Najeon-ri, Saengnim-myeon,
Gimhae-si Gyeongsangnam-do,
621-821, Republic Of Korea
Tel) +82. 55. 326. 9096~7
Fax) +82. 55. 326. 9022
E-mail) gswebinfo@chol.com
Web site) www.gsweb21.com

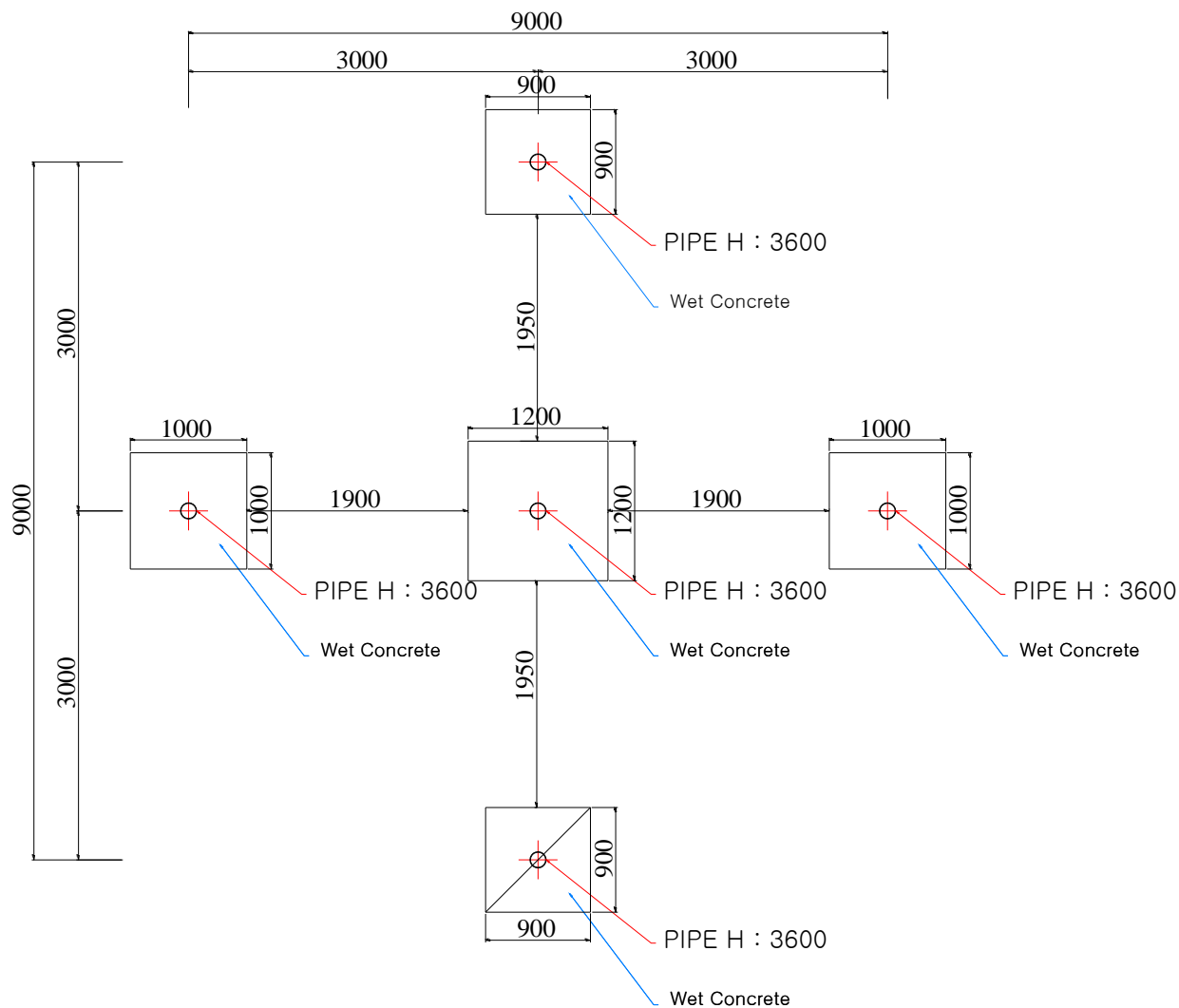


Safety area

The requirements for space and safety clearances are taken from
EN 1176-1 / ASTM-F1487 / CSA Z614

The use zone for stationary play equipment shall extend no less than
85.43 in. (2170mm) from all sides of the play structure.

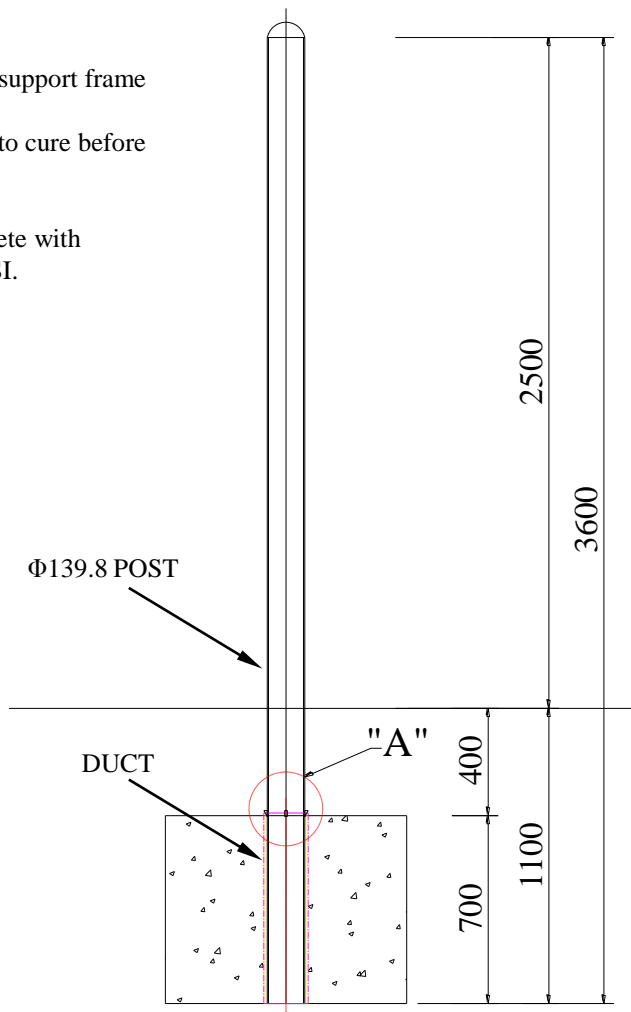




Pouring Concrete

Pour concrete* into wooden support frame until flush to top edge
Allow 3-5 days for concrete to cure before proceeding to next step.

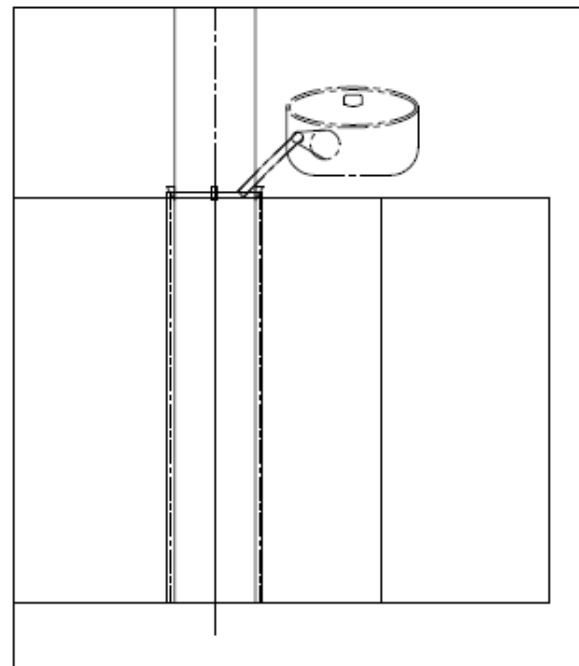
*Concrete is to be wet concrete with minimum 25 MPA / 3500PSI.

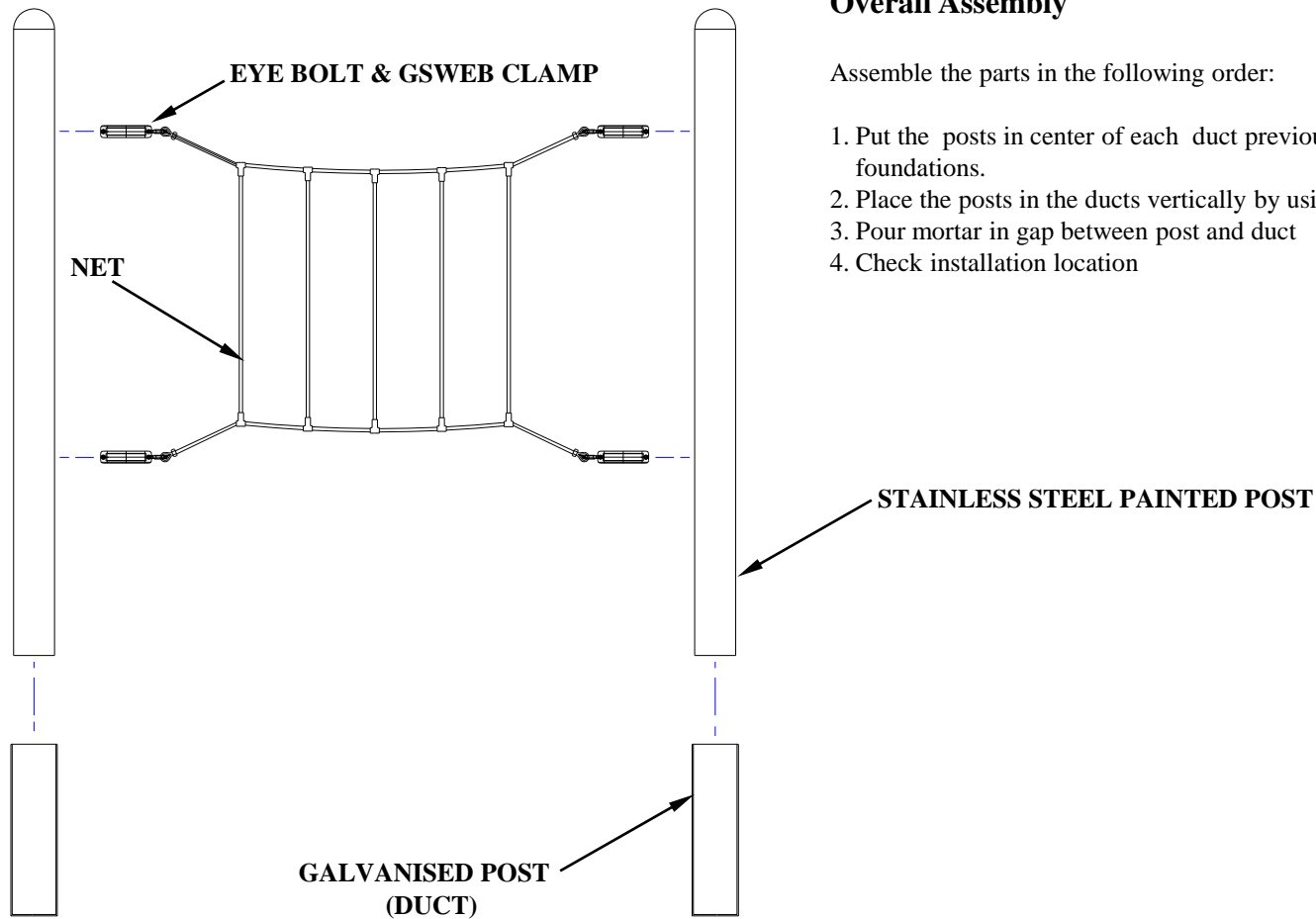


Foundation

DETAIL "A" Part

After putting the post inside duct and positioning it in the center of duct and vertically by using wedge, pour mortar in gap between post and duct





Overall Assembly

Assemble the parts in the following order:

1. Put the posts in center of each duct previously placed in concrete foundations.
2. Place the posts in the ducts vertically by using wedges.
3. Pour mortar in gap between post and duct
4. Check installation location

... cont'd next page

Figure-6: Assemble cable in the attach with stainless steel post

5. Attach the net jointed eye bolt & GSWeb clamp to the post
6. Repeat with each element

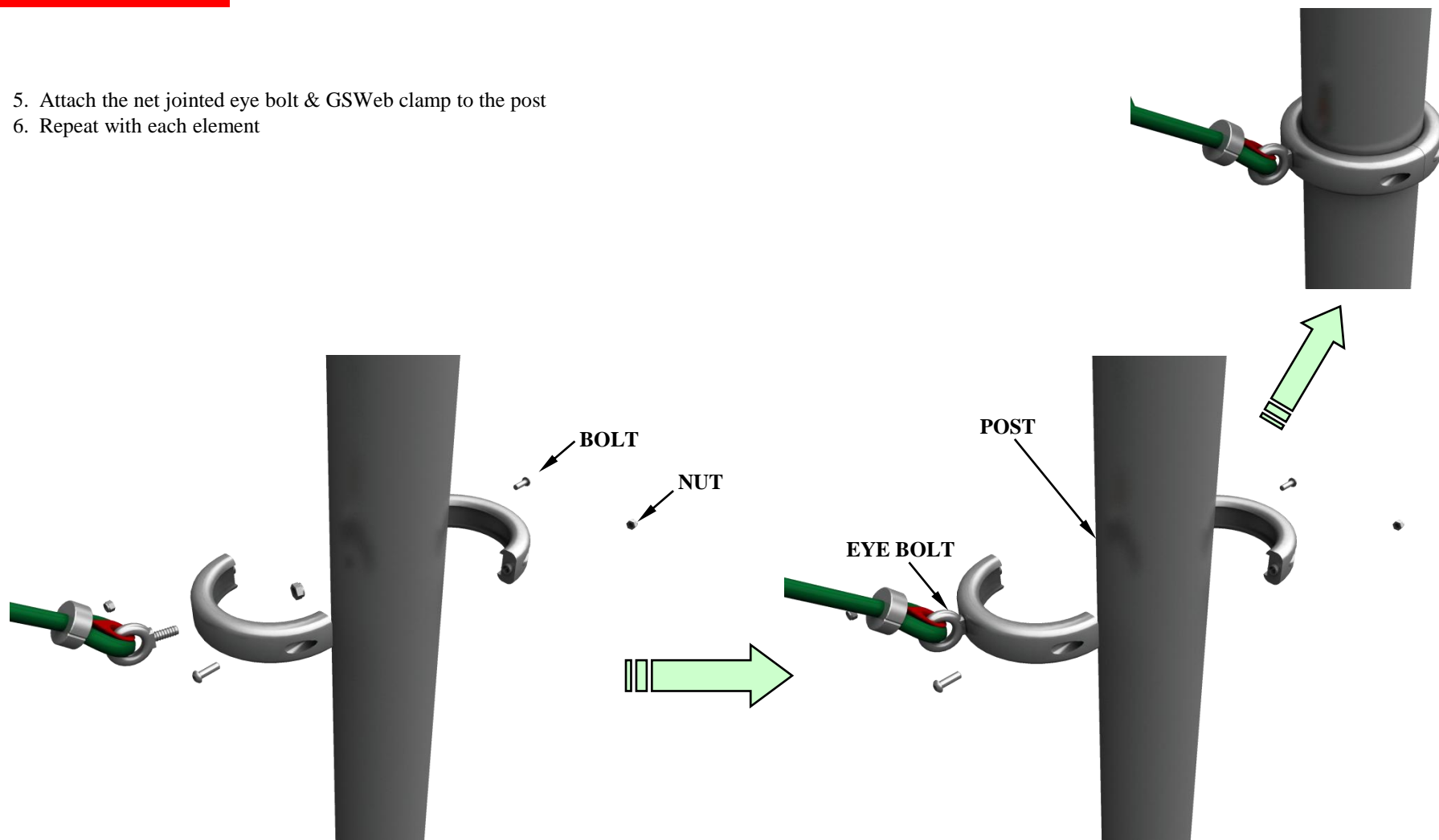
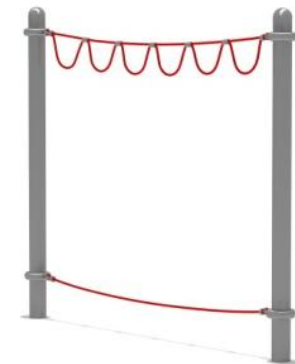
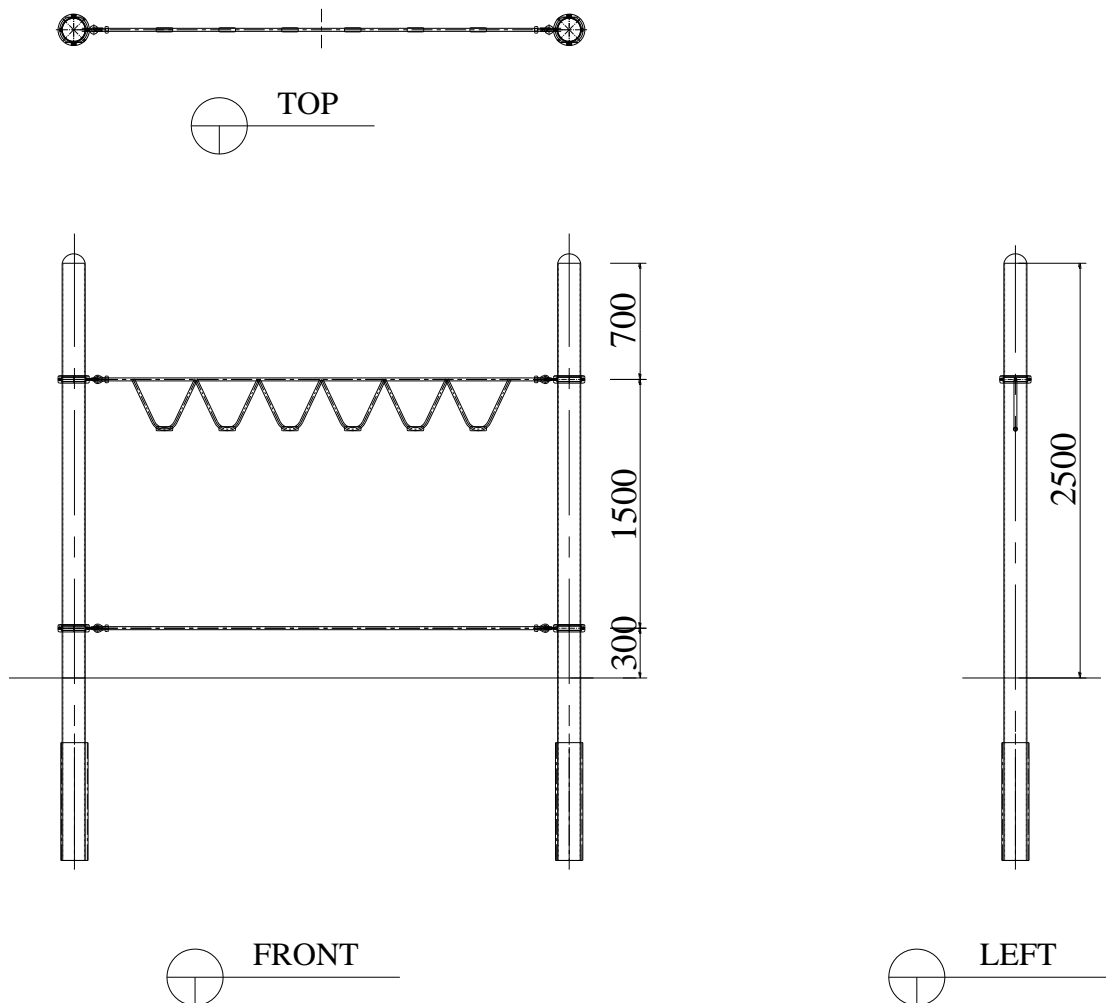


Figure-7: Assemble GSWeb clamp in the attach with stainless steel post

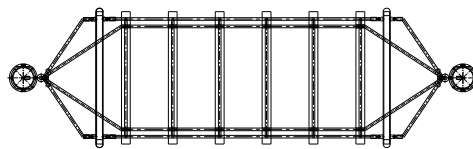
! ATTENTION

Please be sure to install to the specified location

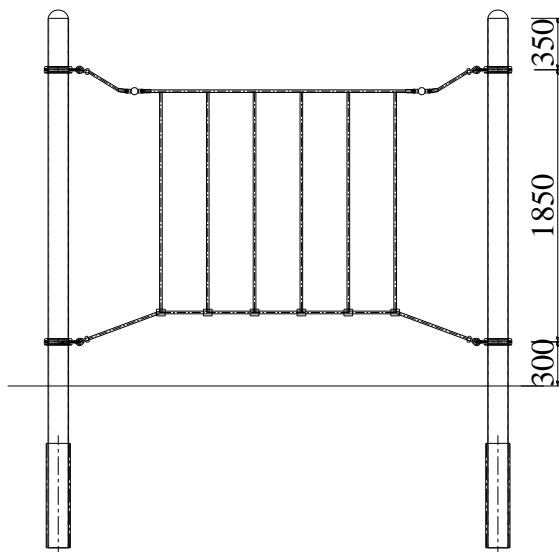


NET SCAPE MINI Attachment location

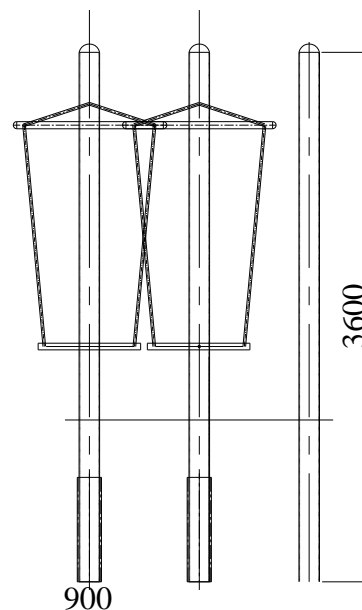
**MODEL NO.
GS-NS M202**



TOP

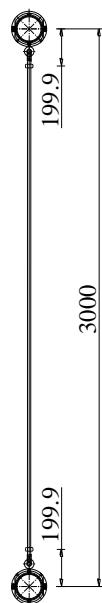


FRONT

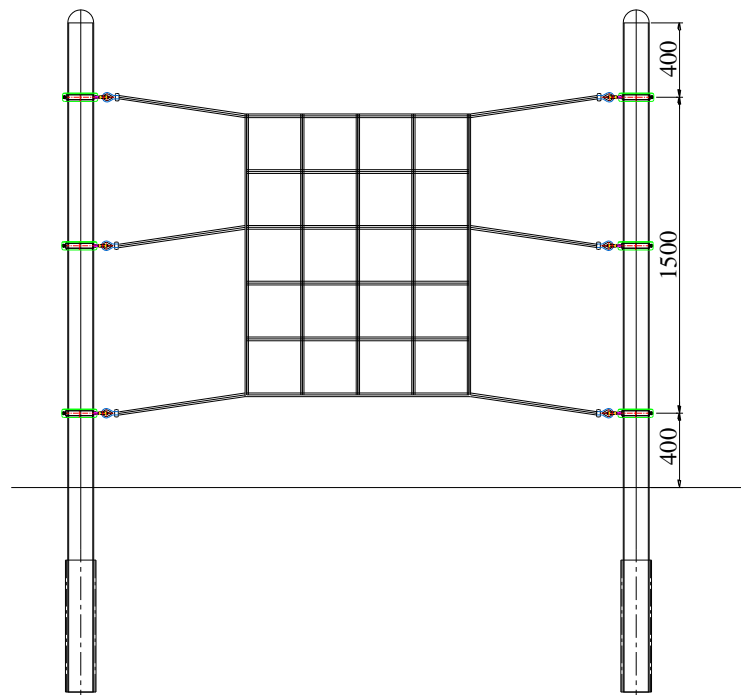


LEFT





TOP

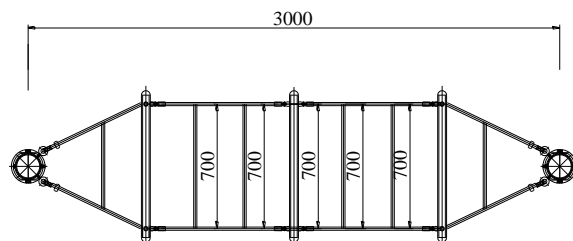


LEFT

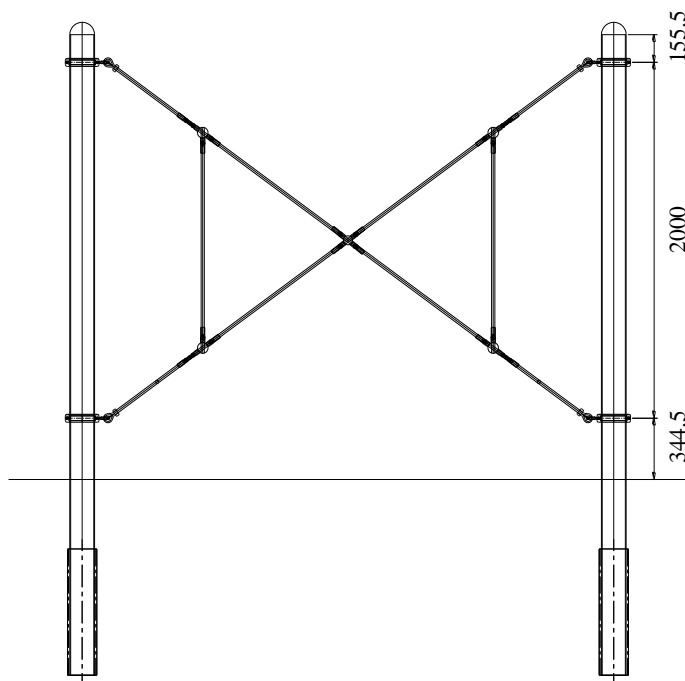


NET SCAPE MINI Attachment location

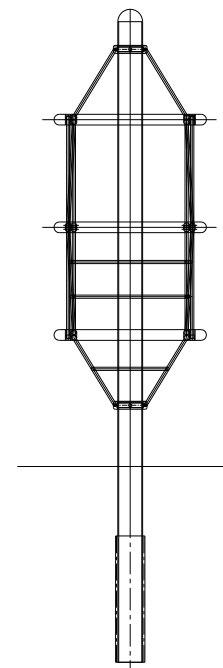
MODEL NO.
GS-NS M202



TOP

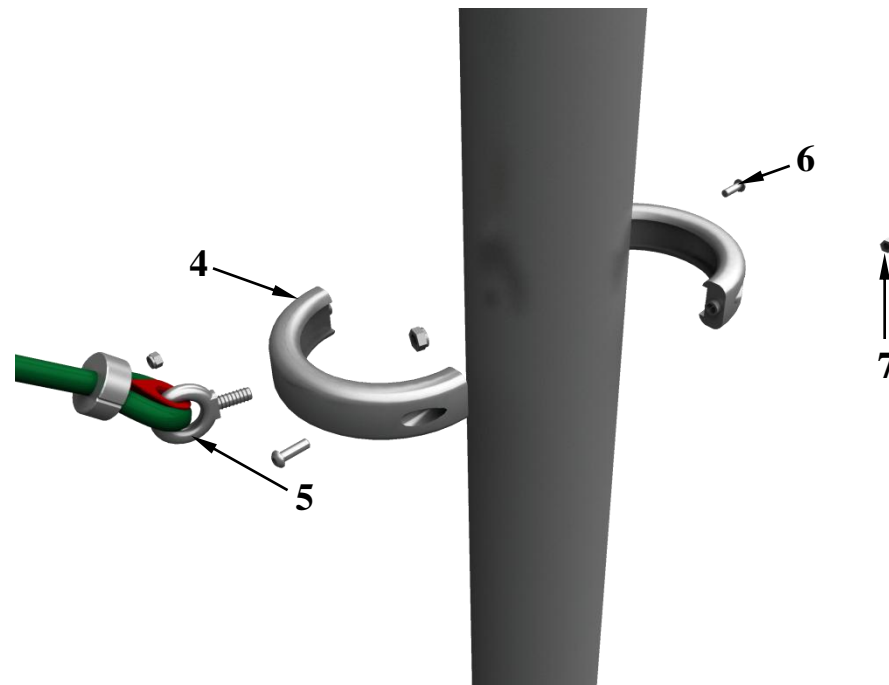
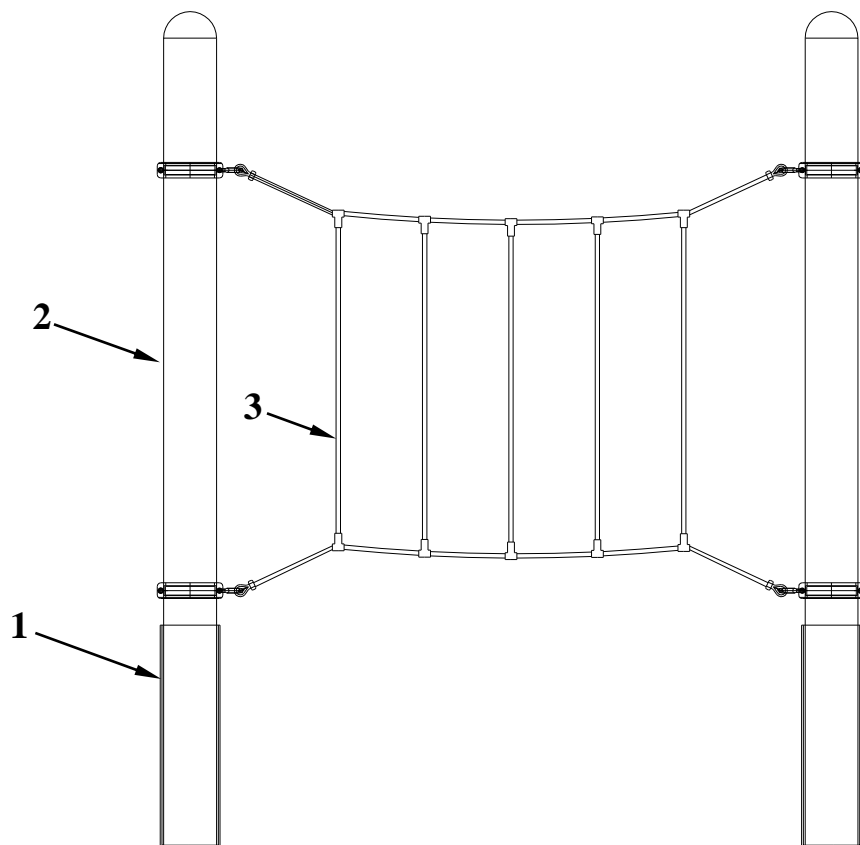


FRONT



LEFT





1: galvanised post
2: stainless steel painted post
3: net

4: GSWeb clamp
5: eye bolt
6: M8 x L60 hexagonal headed wrench bolt
7: M8 nut

A. General safety measures

On the playground there should be a sign(pictogram) giving the following information:

- a) general emergency telephone number;
- b) telephone number to contact maintenance personnel;
- c) name of the playground;
- d) address of playground; and
- e) other relevant local information, if applicable.

The entry, exit and emergency paths to and from a playground, intended for use by the public and emergency services, should be accessible and free of obstacles at all times.

NOTE Attention is drawn to local regulations.

B. Procedures

Defects that occur during operation and which put safety at risk should be corrected without delay. If this is not possible, the equipment should be secured against use e.g. by immobilization or removal.

There should be written operational procedures covering the measures to be taken in the event of accidents, fire and the like.

Until unsafe equipment is repaired and released for use, access by the public should be prevented. Information about accidents brought to the attention of the manager should be recorded on a form that includes the following details:

- a) date and time of accident;
- b) age and sex of victim and clothing worn, Including footwear;
- c) equipment involved;
- d) number of children on site at the time of the accident;
- e) description of accident;
- f) injury sustained including part(s) of body affected;
- g) action taken;
- h) witness statements;
- i) any subsequent equipment modification;
- j) weather conditions; and
- k) any other relevant information.

C. Routine maintenance

To reduce accidents, the owner or operator should ensure that an appropriate routine maintenance schedule is established, implemented and maintained. This should take into account local conditions and the manufacturer's instructions that can affect the necessary inspection frequency. The schedule should list the components to be maintained and should also give procedures for dealing with complaints and breakdowns. The routine maintenance of playground equipment and surfaces should consist of preventative measures to maintain their level of safety, performance and compliance with the relevant part(s) of EN 1176. Such measures should include:

- a) tightening of fastenings;
- b) re-painting and re-treatment of surfaces;
- c) maintenance of any impact attenuating surfaces;
- d) lubrication of bearings;
- e) marking of equipment to signify loose fill finished surface level;
- f) cleaning;
- g) removal of broken glass and other debris or contaminants;
- h) restoring loose fills to the correct level; and maintenance of free space areas.

D. Corrective maintenance

Corrective maintenance should include measures to correct defects, or to re-establish the necessary levels of safety of the playground equipment and surfaces. Such measures should include:

- a) replacement of fastenings;
- b) welding of welding repairs;
- c) replacement of worn or defective parts; and
- d) replacement of defective structural components.

E. Personal safety

Repairs during operation that could put the safety of maintenance personnel or the public at risk, should be avoided.

F. Equipment alterations

Alterations to parts of a piece of equipment or structure that could affect the essential safety of the equipment should only be carried out after consultation with the manufacturer or a competent person.



GS-NS M202

ELEMENTS LIST

NO.	QTE	Description	Size (m)	Capacity	Fall Height (m)
1	1	GS-NS E08 X Bridge	L3.0 x W0.7m	4	1.35
2	1	GS-NS E10 S Bridge	L3.0 x W0.8m	6	
3	1	GS-NS E09 Cliff Hanger	L4.2m	5	
4	1	GS-NS E05 Net Wall	L3.0m	6	1.4
			SumTotal of Capacity	21	